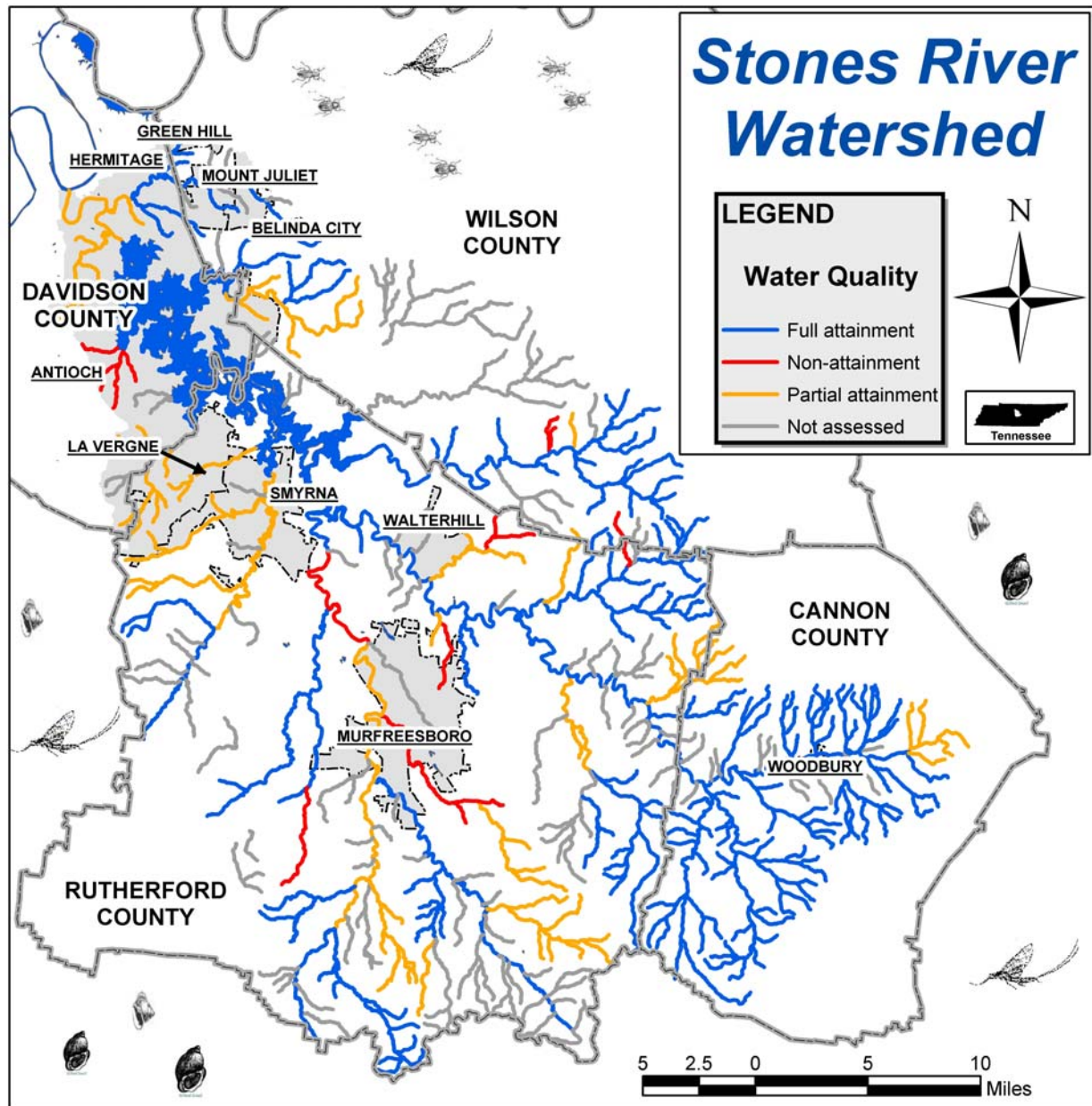


KNOW YOUR WATERSHED



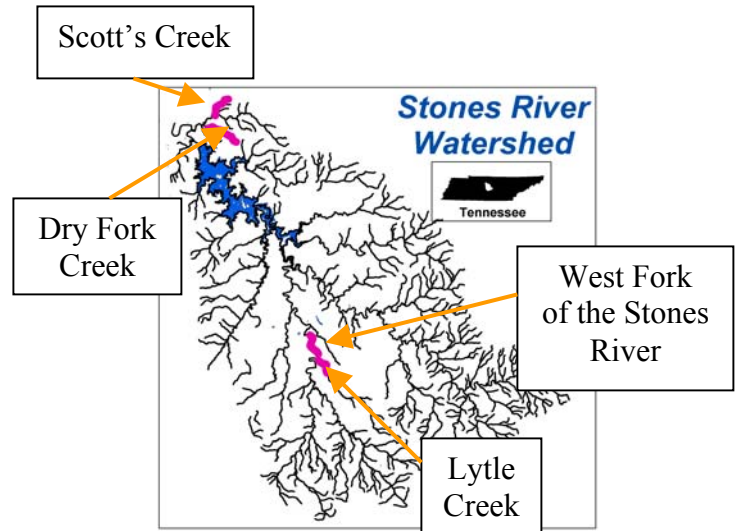
- The Stones River Watershed is the region from which water drains into the Stones River.
- The watershed includes parts of four counties and numerous communities.
- Water drains to the northwest (upper left corner) and flows into the Cumberland River.
- The Tennessee Department of Environment and Conservation (TDEC) has found that most streams are relatively healthy (blue), but some only partially support human and natural uses (orange). A few (red) are in worse health. TDEC's assessment of stream health may change over time. To learn more, visit:

<http://www.state.tn.us/environment/wpc/watershed/wsmplans/stones/>

or http://gwidc.memphis.edu/website/wpc_arcmap/viewer.htm

UNDERSTANDING WATER QUALITY:

Some streams in the Stones River Watershed flow through developed areas but still have relatively good water quality. How can this be? To find out, scientists examined two of these streams – Scott’s Creek and Dry Fork Creek. For comparison, they also examined two other streams – the West Fork of the Stones River and Lytle Creek. Study results suggest that stream bank vegetation helps the streams stay healthy.



NATIVE VEGETATION CONTRIBUTES TO STREAM HEALTH:

- Shades and cools water
- Provides bank-stability, decreasing erosion
- Provides food and shelter for wildlife
- Filters pollution from urban runoff



GOOD!

Healthy vegetation along Dry Fork Creek,
Davidson Co., TN



BAD!

Photos by A. Wonnell

Disturbed vegetation along a portion
of Scott's Creek, Davidson Co., TN

*Funded by the Tennessee Department of Environment and Conservation.
Prepared by Andrea Wonnell and Mark Abolins,
Middle Tennessee State University*

